



SIDDHA

SIDDHA INFRA PROJECTS PRIVATE LIMITED
 CORPORATE OFFICE: 308 & 309, 2nd Floor, Nemi Sagar Colony, Queens Road, Jaipur 302 021
 ADMINISTRATIVE OFFICE: Siddha House, 68 Gopal Road, Jaipur 302 001 P +91 141 2377177
 E: jaipur@siddhagroup.com M: siddhaaangan.com

SITE: Siddha Aangan, Bagu Khud Link Road, Before Toll, Ayer Road, Jaipur 302026

Disclaimer: All information, features and offerings in this flyer are subject to change without notice. Photographs used in this flyer are for illustration purposes only and may not bear any resemblance to actual features/offerings. This brochure is not a legal offer or document.



www.Zricks.com



SIDDHA
aangan

Your home is your pride, your honour.

This is where your dreams take shape and the colours of life come alive. Unlock a brighter everyday in Jaipur, from Siddha Aangan. Savour every moment of high life from the Heights—a modern residential complex offering cosy apartments, or let your spirit unwind in excitement at the Villas—a spacious nest from bungalows.

Unveil a new chapter in your new home.



Green benefits



Reduced energy
usage and costs



Reduced water
usage through
low flow fixtures



Sewage treatment,
dual plumbing and
water recycling

Green Flats for you and the environment

Green Flats are based on the next generation philosophy of living that puts emphasis on the concept of environment friendly and sustainable living. They ensure an optimised use of energy, water and all other building materials. These Flats are the ideal way to lead an eco-friendly life that makes the idea of happy and healthy living possible. Be it light, ventilation or other health benefits, Green Flats are ideal to make day to day life a green life in the true sense.

Think green, live green.



Rainwater harvesting system
and grid powers to recharge
the natural water reservoirs



Use of recycled
materials such as fly ash
in cement and brick work



Native and
drought-tolerant
species planted
in the landscape



Periodic indoor air quality
audits conducted during the
construction phase



Improved indoor air quality
through the usage of
low-VOC paints, adhesives
and eco-friendly chemicals



High window-to-wall
ratio guaranteeing
better views and
cross ventilation



Waste management
and recycling set-up
in place



Reduced greenhouse gas
emission and
carbon footprint

ZRICKS



FLATS

Live like you imagined

Everybody wants to fly like a bird. It's time for your dreams to take off at Saksha Aangan. Explore life from the flats – cosy, stylish apartments where you can design the way you live. Road, Halls, Majra and Soca are the four towers in which you can spread your wings and find freedom—just like the precious birds they are named after.

Construction Specifications

Structure

Earthquake-resistant RCC framed construction with infill bricks wall

Doors/Windows

Toughened timber/ stone framed/ solid core wooden flush shutters
Aluminium frames with fully glazed shutters and superior quality fittings

Flooring

Vitrified/Ceramic flooring in all bedrooms, living/dining room and common areas

Kitchen

Semi-modular kitchens
Anti-skid vitrified/ceramic tiles floor
Counter top with steel sink
Dadoes: Ceramic tiles up to a height of 2 feet from counter

Toilets

Anti-skid ceramic tile flooring
White, high quality porcelain fittings
Chromium-plated premium fittings
Dadoes: Ceramic tiles up to a height of 2 feet

Electricals

Superior quality concealed copper wiring with the latest modular switches and miniature circuit breakers
TV socket and provision for broadband connection
AC/Cooler points in each room

Fire fighting system

Fire fighting insulation

Exterior

Latest weatherproof non-fading exterior finish of the highest quality

VILLAS

Nestled amidst greenery and cobbled roads, the spacious Villas of Siddha Aangan promise a luxurious Reside. Modern styling reflects grandeur, with two types of beautiful living spaces to choose from, these niche villas have been made brick by brick to pamper your dreams.

VILLA - TYPE A

- 4 BHK villa
- Servant quarter
- 3612' X 574' (208 sq yards)
- 2984 sq ft built-up area

VILLA - TYPE B

- 4 BHK villa
- Servant quarter
- 3152' X 4832' (188 sq yards)
- 2276 sq ft built-up area



Construction Specifications

Structure

ROCC composite structure with infill brick walls

Internal walls and ceilings

Cement plastering overad with smooth, impervious plaster of paris

Doors/ Windows

Toughened limestone framed/solid core wooden flush shutters
Wooden frame windows with fully glazed shutters and superior fittings
Grills on windows

Flooring

Master bedrooms: Wooden pattern/teak/vitrified flooring
Living and Dining Rooms: Vitrified/ceramic tile flooring
Kitchens: Anti-skid ceramic tile flooring
Other rooms: Vitrified/ceramic tile flooring

Kitchen

Modular kitchen
Granite counter with stainless steel sink
Dadoes: Ceramic tiles up to a height of 2 feet from the counter top

Toilets

Anti-skid ceramic tile flooring
Granite counter top in master toilet
Ceramic dado up to knee level
Toilet fixtures with premium CP fittings and mirrors
Premium, white, porcelain sanitary ware

Electrical and electronics

Premium concealed copper wiring with miniature circuit breakers
Latest modular switches
Provision for AC in Living room & Bedrooms
Provision for Intercom

Security

The entire estate is secured by hi-tech security systems
Entrance manned by security round the clock

Power backup

Adequate power backup capacity for common facilities

Water supply

Regular water supply



Amenities and Facilities at Siddha Aangan Plots and Villas

Resident's club
Banquet hall
Swimming pool
Gymnasium
Library
Terrace garden
Multi-purpose hall
Yoga/Meditation room
Indoor Games, Table tennis/Pool/Casino/Darts/Chess

Party hall
Party lawn
Coffee shop
Restaurant
Cable TV/DTH
Broadband point
Power backup for common areas
Regular water supply
Sewage treatment plant
Rainwater harvesting



Amenities and Facilities at Siddha Aangan Plots and Villas

Children's play area
Jogging track
Landscaped green areas
Well decorated lobby
Visitors car park
Convenience store
Provisions for:
Pharmacy
Milk booth
Fresh fruits & vegetables counter

Reflexology pathway
Park with fountain
Campus surrounded by high walls
24-hour security with CCTV

ZRICKS.COM





Flat No.	1	2	3	4	5	6	7	8	9	10	11	12
Type	2BHK	2BHK	1BHK	1BHK	2BHK	2BHK	2BHK	2BHK	2BHK	2BHK	2BHK	2BHK
Carpet Area (Sq.ft)	475	475	325	325	475	475	475	475	475	475	475	475

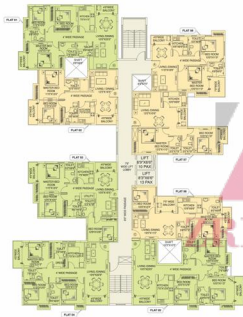
1 BHK 2 BHK 3 BHK



Flat No.	1	2	3	4	5	6	7	8	9	10	11	12
Type	2BHK	2BHK	1BHK	1BHK	2BHK	2BHK	2BHK	2BHK	2BHK	2BHK	2BHK	2BHK
Carpet Area (Sq.ft)	475	475	325	325	475	475	475	475	475	475	475	475

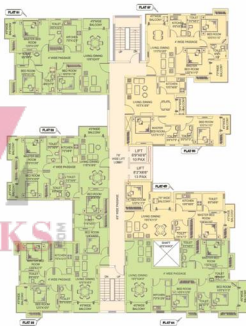
1 BHK 2 BHK 3 BHK





Planteas	1	2	3	4	5	6	7	8
Type	3 BAH	2 BAH	3 BAH	3 BAH	3 BAH	2 BAH	1 BAH	2 BAH
Solicitudes Area (m ² /B)	907	1107	900	907	907	710	1100	900

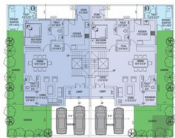
1. [Home](#) 2. [About Us](#) 3. [Contact Us](#) 4. [Privacy Policy](#) 5. [Terms of Service](#)



Run No.	1	2	3	4	5	6	7
Type	1000	1000	1000	1000	1000	1000	1000
Substrate Area (sq ft)	1000	1000	1000	1000	1000	1000	1000

100% 100%





GROUND FLOOR PLAN



FIRST FLOOR PLAN

4 BHK villa
367'0" x 57'4" (208 sq yards)
2904 sq ft built-up area



GROUND FLOOR PLAN



FIRST FLOOR PLAN

4 BHK villa
371'0" x 45'0" (168 sq yards)
2976 sq ft built-up area





The Group

Founded in 1986, Siddha Group has carved for itself a respected niche in the realty space. In its three decades Siddha has demonstrated its competence through its ideation and execution of world-class residential and commercial complexes. Its presence at strategic locations of Jaipur, Kolkata Mumbai & Bengaluru is significant. Its projects perfectly match superior architectural concepts with quality of construction and finish. The group pursues a single-minded goal: raise the benchmarks in the realty space of Jaipur and Kolkata relentlessly.

Few of our ongoing/upcoming projects



SIDHA BASIL
26 Grand Apartments
Bani Park, Jaipur



SIDHA POINT
Commercial Complex
M.I. Road, Jaipur



SIDHA HAPPYVILLE
1680 Apartments
Rajpath Chaurmaha, Kolkata



SIDHA GALAXIA PHASE I
346 Apartments
Rajpath Main Road, Kolkata



SIDHA WATERFRONT
2000 Apartments
74 Rajpath Rajmehina Mission School,
Kharidip, Kolkata



SIDHA EDEN LAKEVILLE
2160 Apartments
Burmahgity, Kolkata



SIDHA SUBURBIA
2000 Apartments
Banspada, Kolkata



SIDHA WESTON
Commercial Complex
Weston Street, Kolkata



SIDHA NIRVANA
23 Apartments
Paddapukur Road, Kolkata

Few of our completed projects



RAJ AHANGAN
Independent Villa, Poraj Nagar, Jaipur
In-Association with Raj Housing Board



JAPUR TOWER
Commercial Complex
M.I. Road, Jaipur



SIDHA REGAL
26 Apartments
Dev Nagar, Bani Park, Jaipur



SIDHA JEWELS
Commercial Complex
Rajmehina J.Ka Park, Jaipur



XANADU STUDIO
2+1 Studio Apartments
Rajmehina, Kolkata



SIDHA PARK
2+1 Commercial Apartments
Park Street, Kolkata



SIDHA POINT
Commercial Complex
Park Street, Kolkata



SIDHA PINES
625 Apartments
Rajmehina, Kolkata



SIDHA TOWN RAJARHAT
1337 Apartments
Rajmehina, Kolkata

Our Associates



Architects

Agarwal & Agarwal, founded in 1986 and headed by Jay Prakash Agarwal, is one of East India's leading firms of architects. It is renowned for designing top-end malls, hotels, office complexes and residential apartments, townships, IT infrastructure complexes, and hotels, malls and leisure projects.



Legal Advisors

Saha and Ray, led by Alok Saha and Joyati Ray, a premier law firm in Kolkata, specialises in realty and property laws. It is armed with international affiliations and global terms of reference.

S Kishore & Associates, Jaipur are a reputed law firm since 1932. They have offices in Jaipur and Mumbai.



ZRICKS

